



ILENE SHAPIRO
COUNTY EXECUTIVE

VILLAGE OF PENINSULA - SANITARY PRELIMINARY ENGINEERING REPORT PRESENTATION

AGENDA



- PRELIMINARY ENGINEERING REPORT (PER) PROCESS
- PER RECOMMENDATIONS
- NEXT STEPS
- ASSESSMENTS

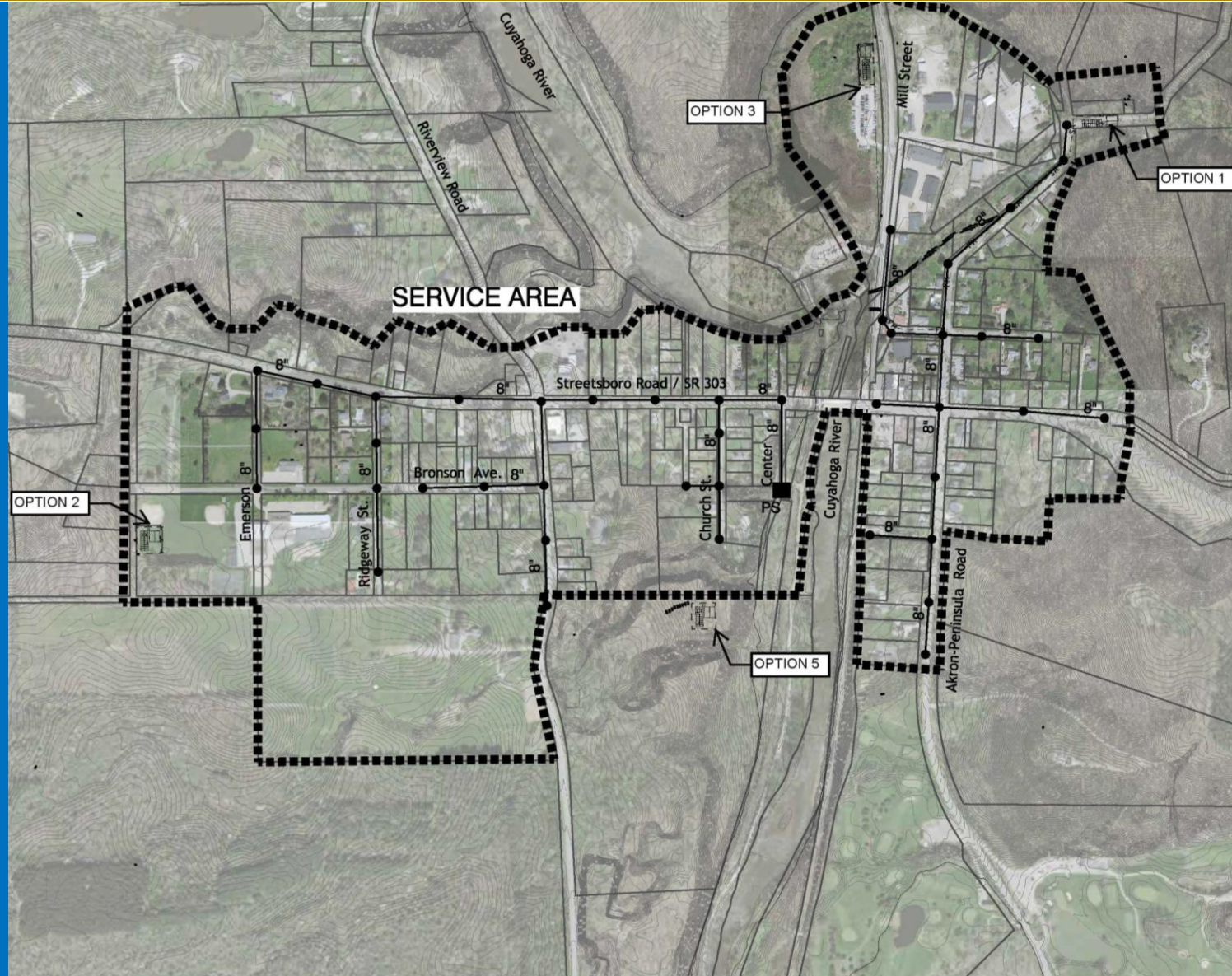




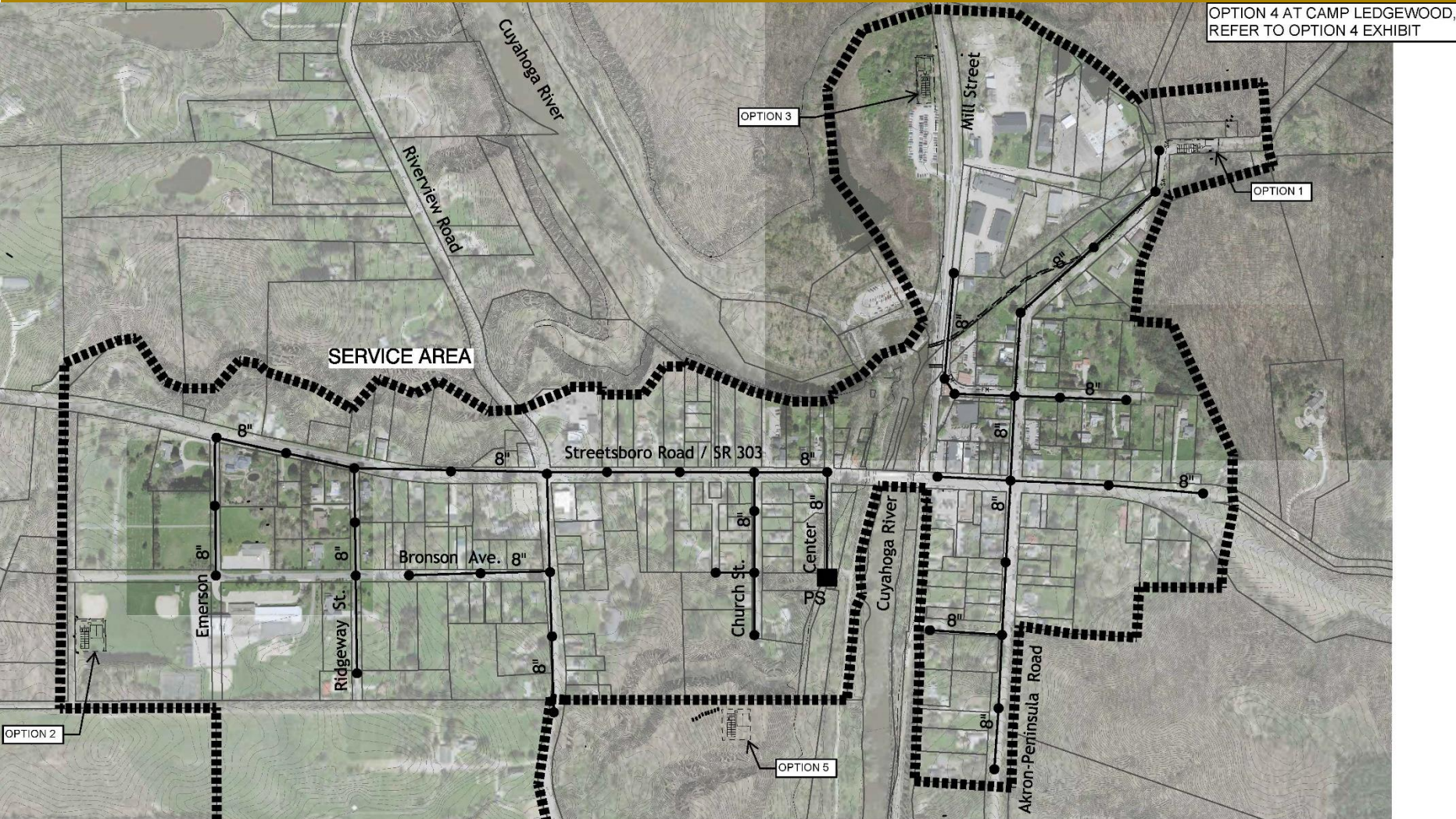
- Preliminary Engineering Report (PER) Process

- Overview
- Previous Studies
- Alternative Investigation (WWTP & Pumping)
- CVNP and Conservancy for CVNP Discussions
- Funding
- OEPA Discussions
- Conclusion

SERVICE AREA – GOLF COURSE



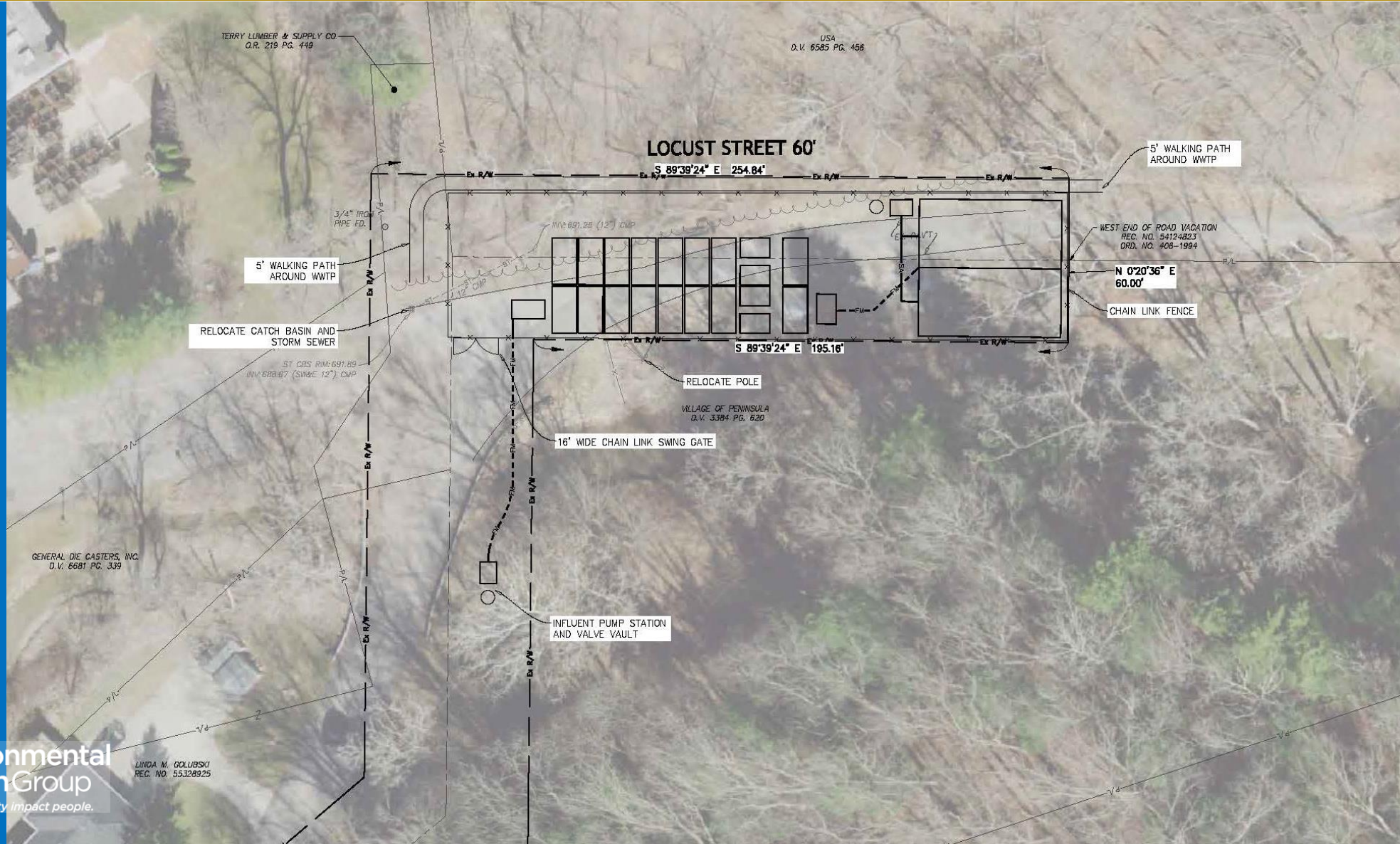
SERVICE AREA - DETAILED



OPTION 4 AT CAMP LEDGEWOOD



WWTP LAYOUT – LOCUST STREET



ASSESSMENTS SANITARY SEWER



- The County Executive has set aside \$7.5 million in ARPA dollars to fund the sanitary collection and treatment system in the Village.
- The County has partnered with the City of Akron on their fourth amendment to their U.S. EPA consent decree. If the amendment is granted, the \$7.5 million ARPA dollars would be shifted to fund potential water distribution in the Village.
- Current construction cost of the system is estimated at approximately \$6 million.
- If the sanitary sewer project costs remain within current estimates, property assessments aren't planned for the sanitary collection and treatment system.

ASSESSMENTS WATER DISTRIBUTION



- The County continues to work with community representatives to bring water distribution to the Village.
- The County has been awarded a \$500,000 H2Ohio grant for design of the water system.
- Current issue: Finding water purveyor that offers affordable solution for the Village.

PROPERTY OWNER COSTS



- SEWER FEES:

RESIDENTIAL FLAT RATE: \$60.23/MONTH

COMMERCIAL FLAT RATE: \$100.35/BENEFIT

INDUSTRIAL FLAT RATE: \$115.13/BENEFIT

GOVERNMENT: \$81.05/BENEFIT

- CONNECTION FEE: \$4,274/BENEFIT

- PERMIT FEE:

RESIDENTIAL: \$215.00

NON-RESIDENTIAL: \$333.00 (\$1.66/FOOT >100 FEET)

Next Steps

1. Village Requests & County Accepts Village Into the Summit County Sewer District
2. Summit County Solicits Requests for Qualifications from Engineering Firms to Undertake the Detailed Design
3. Final Design Completed and Construction of the Proposed Improvements
4. Parallel with the Above Steps County/Village Will Continue to Pursue Public Water Source to Provide Service.



THANK YOU!

